

2014 ANNUAL REPORT

Together, **better,** stronger.



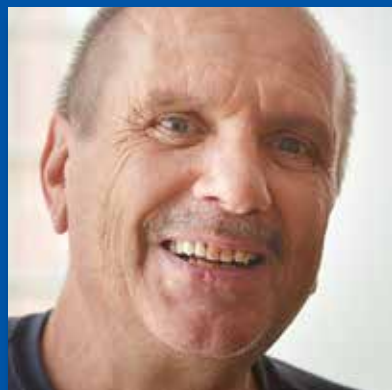
CATHOLIC
CHARITIES
of St. Paul and Minneapolis

Working together to prevent homelessness.



Thanks to you, Harriett, a 68-year-old grandmother is able to stay in her home, living independently and enjoy life to the fullest. She is happy she can stay in her home while getting the care and assistance she needs through Catholic Charities' **Aging Services** program.

"I am thankful to the Lord for this, if it wasn't for you all I don't know what I'd do."



Darcy, 57, had a safe place to recover at **Exodus Residence**, thanks to your support. While at Exodus he was able to get his diabetes under control, benefit from counseling services and build a foundation for a stable, secure life. He is now employed, has a home and is an active member of the community while maintaining his sobriety.

"The staff at Exodus is the tops. They are there for you."

TOGETHER, BETTER, STRONGER.



For 4-year-old **Drake***, **Northside Child Development Center** is a fun place to go each day. For his parents it is so much more. They appreciate the relationships they have made with the staff and say they can see positive differences in their son as he has learned and matured at Northside.

*Name has been changed.

Meeting basic needs in times of crisis.

TeeTee was 18 and had no where else to turn when she found **Hope Street**. When Catholic Charities and you invest in youth it gives them an opportunity to have stable housing and become working, contributing members of the community.



Because of you, Sheila, a mother of four, was given the chance to start her life again at Catholic Charities' **Family Service Center**. Once she found shelter, and knew her children were in a safe place, Sheila was able to focus on her next steps and was able to secure a full-time job. Sheila and her family are now happy to have a home in an east metro apartment.
"I'm grateful to have been given a chance to start my life again."



**This year, Catholic Charities
provided more than
450,000
nights of shelter
to those most in need.**

TOGETHER, BETTER, STRONGER.

Norma went from living in a comfortable home in the suburbs to a bunk in the second floor women's unit at Catholic Charities' **Dorothy Day Center**. Thanks to your help, Norma had a place to land and receive the help and support needed to find a home.

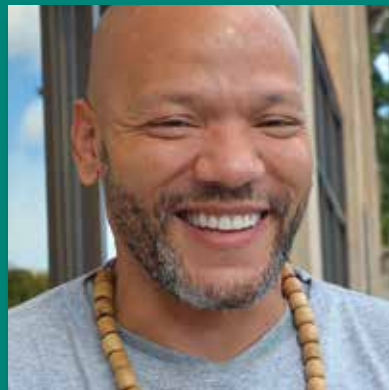


Creating pathways out of poverty.



Julie once found success at the top of the career ladder, but depression and unfortunate circumstances found her homeless and on the streets. She now finds hope and peace on the top floor of Catholic Charities' **Higher Ground**. Julie is moving up and out of homelessness thanks to your support and the stability a home provides.

"You can't get much higher than Higher Ground. They do so much for everybody."



Because of you, Carlton, 44, is benefitting from the employment services program at Catholic Charities' **Opportunity Center**, which provides individualized job coaching to help men and women in poverty match their skills with employment opportunities.

"There is a way out...I don't plan on being homeless too long."

TOGETHER, BETTER, STRONGER.



Mai went from being a single mother living in a homeless shelter to finding a job and getting approved to buy a house. After meeting regularly with Catholic Charities staff, Mai was able to take control of her life. She graduated from school, secured a full-time job and is engaged to Kim.



How powerful we are when we speak up together for those in need.

Our volunteers gave more than **165,000** hours to those we serve. Thank you!

We couldn't do this work without our amazing donors, funders, volunteers and advocates. **Thank You!**

Funding for shelter and housing.

The Minnesota Legislature passed a bonding bill to fund capital investment projects across the state. The bill includes a record-breaking \$100 million for statewide affordable housing needs and \$6 million specifically for the Dorothy Day Center ReVision.

This accomplishment was possible because of your support.



Advocates in Action.

Advocacy emails, phone calls, letters and visits to the State Capitol created a groundswell of statewide, bipartisan support for the Dorothy Day Center ReVision and Homes for All, in a year when there were many competing and important projects.

An estimated 10,000 advocates generated postcards that were distributed to the legislature and Governor.

TOGETHER, BETTER, STRONGER.

Financial Statement

For fiscal year ending June 30, 2014

BALANCE SHEET

Assets (in thousands)	2013	2014
Cash and cash equivalents	\$3,620	\$6,314
Contracts and pledges receivable	4,304	5,399
Prepaid expenses	1,061	1,088
Investments & split-interest agreements	47,191	49,820
Property and equipment (net)	18,712	17,242
Total Assets	\$74,888	\$79,862

Liabilities (in thousands)	2013	2014
Accounts payable and other accruals	\$7,932	\$8,192
Long-term debt	10,237	10,124
Total Liabilities	\$18,169	\$18,316

Net Assets (in thousands)	2013	2014
Unrestricted	\$42,653	\$46,405
Temporarily restricted	8,424	9,496
Permanently restricted	5,642	5,645
Total net assets	56,719	61,546
Total Liabilities and Net Assets	\$74,888	\$79,862

SOURCES AND USE OF FUNDS

Revenue, Support & Investment Income (in thousands)	2014	PCT.
Government contracts	\$19,958	39.0%
Contributions and grants*	17,464	34.0%
Program fees	7,409	15.0%
Investment and other resources	6,172	12.0%
Total Revenue and Support	\$51,003	100.0%

*Contributions and grants comprised of:

Private contributions and grants	\$10,127	20.0%
In-kind gifts	\$2,743	5.0%
United Way grants	1,841	4.0%
Catholic Services Appeal Foundation	1,421	3.0%
Wills and bequests	1,332	2.0%

Use of Resources (in thousands)	2014	PCT.
Housing stability services	17,483	34.3%
Children and family services	9,748	19.1%
Client support services	5,265	10.3%
Migration and refugee services	952	1.9%
Older adult services	1,860	3.6%
Social justice advocacy	684	1.3%
Management and general	6,925	13.6%
Endowment and investment	5,743	11.3%
Fundraising	2,343	4.6%
Total Use of Resources	\$51,003	100.0%

To review the complete audited report, visit cctwincities.org/financials.

Areas of Revenue & Support

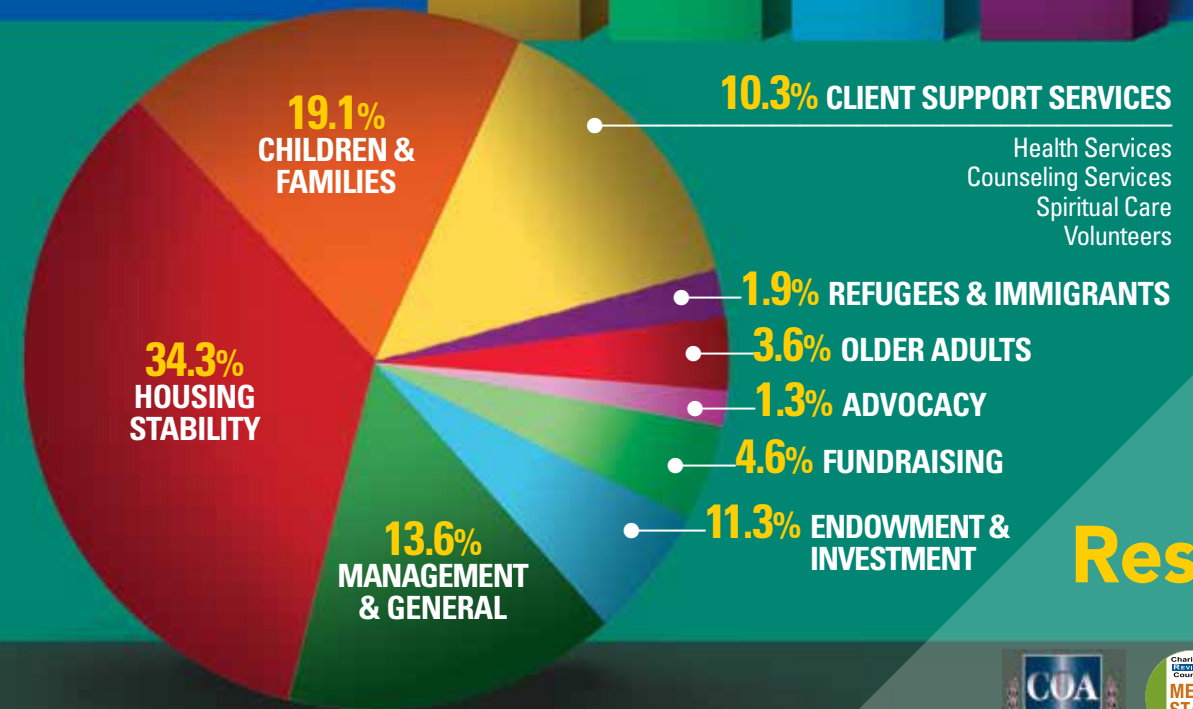
15% PROGRAM FEES

39% GOVERNMENT CONTRACTS

34% CONTRIBUTIONS & GRANTS

Private Contributions & Grants.....20%
 In-Kind Gifts.....5%
 United Way.....4%
 Catholic Services Appeal.....3%
 Wills & Bequests.....2%

12% INVESTMENT & OTHER



Use of Resources

Health Services
 Counseling Services
 Spiritual Care
 Volunteers

Thank you for your support!

For a listing of our Leadership Giving Society donors, visit cctwincities.org/donorlist



For fiscal year ending June 30, 2014

Board of Directors

Ellen L. Abeln, MD

Suburban Radiologic Consultants, Ltd.

Jarod W. Allerheiligen

Grant Thorton, LLP

James S. Anderson

Retired, 3M

Tom Arata

Ecolab

Lisa M. Brabbit

University of St. Thomas School of Law

Jane McDonald Black

Community Volunteer

Peter W. Carter

Dorsey & Whitney, LLP

Joseph T. Cavanaugh

Youth Frontiers, Inc.

Timothy M. Connelly

The Law Office of Tim Connelly, PLLC

Kathleen M. Cooney

(Vice Chair)
HealthPartners

Terrance R. Dolan

U.S. Bancorp

Julie Heyroth Gasper

Financial Consultant

Bettina (Tina) Hoye

NTH

Thomas M. Hubler

Hubler for Business Families, Inc.

John W. Kelly

United Health Group, Inc.

Laura M. King

(Chair)
Minnesota State Colleges and
Universities

John Knapp

Winthrop & Weinstine, P.A.

Matt Kramer

Saint Paul Area Chamber of
Commerce

Rev. Charles V. Lachowitz

Archdiocese of St. Paul &
Minneapolis

Nekima Levy-Pounds

University of St. Thomas School of Law

Tom Mahowald

UCare

Richard (Rick) Martinez

Robins Kaplan Miller and Ciresi

Timothy E. Marx

Catholic Charities

Teresa Mogensen

Xcel Energy

Margaret Murphy

OLSON

Dr. Samuel L. Myers, Jr.

University of Minnesota –
Humphrey Institute of Public Affairs

Vivian Jenkins Nelsen

INTER-RACE Institute

Laura M. Newinski

KPMG, LLP

Most Rev. John C. Nienstedt

Archdiocese of Saint Paul and
Minneapolis

Marie C. Pillai

General Mills

Scott J. Pollei

Boulay PLLP

Daniel Riley

Target Corporation

James Rockwell

Abbott Downing

Kate S. Roehl

Lake Region Medical

Kathleen Sanberg

US Bankruptcy Court

Mark Stenglein

CBIZ

Bob Tift

Crescent Cove

Bev Turner

Turner Public Affairs, LLC

Noelle P. Turner

NPT Design

Thomas J. Woessner

Lindquist & Vennum, PLLP



CATHOLIC
CHARITIES
of St. Paul and Minneapolis

1200 Second Avenue South
Minneapolis, MN 55403

TOGETHER, BETTER, STRONGER.

Visit us online at cctwincities.org or call 612-204-8500

